



A National Study of **College Students'**
Search for Meaning and Purpose

Westminster College students participated in a study of college students' beliefs and values (CSBV) in Fall 2004. The study was conducted as part of the CIRP freshmen survey.

WC students joined their peers at 240 institutions across the nation in this Templeton Foundation initiative. The survey was designed to identify trends and patterns in the spiritual and religious experiences of students. The CSBV will be repeated again in Fall 2007.

Selected graphical summaries are included in the pages that follow. Please feel to contact the WC Office of Institutional Research.



"This breakthrough study,
exploring new territory
is much needed because college
students are the **leadership** of
the future and will set the
Moral Tone of Society
in the years ahead."

George Gallup, Jr.
Chairman, George H. Gallup
International Institute

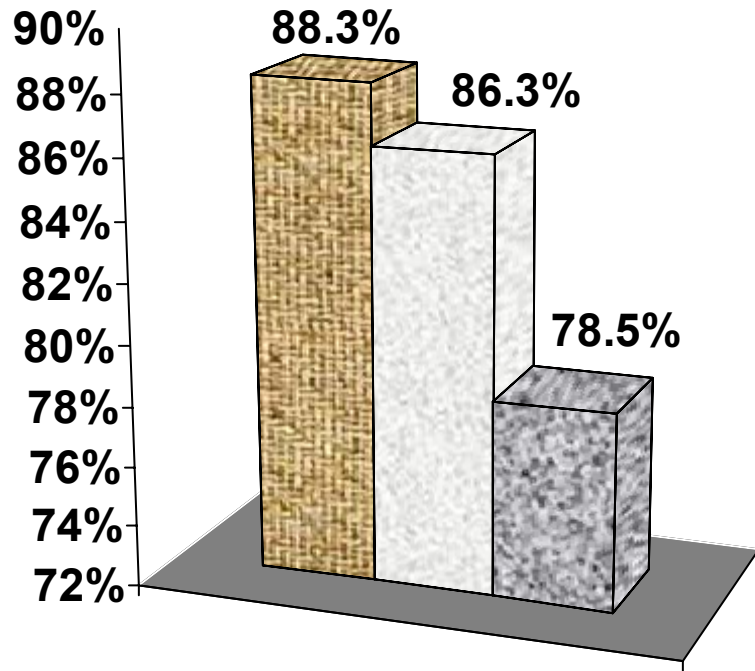


2004 Survey of College Students' Beliefs & Values

Summary of Results for First-time Full-time
Students at Westminster College



Do you believe in God?

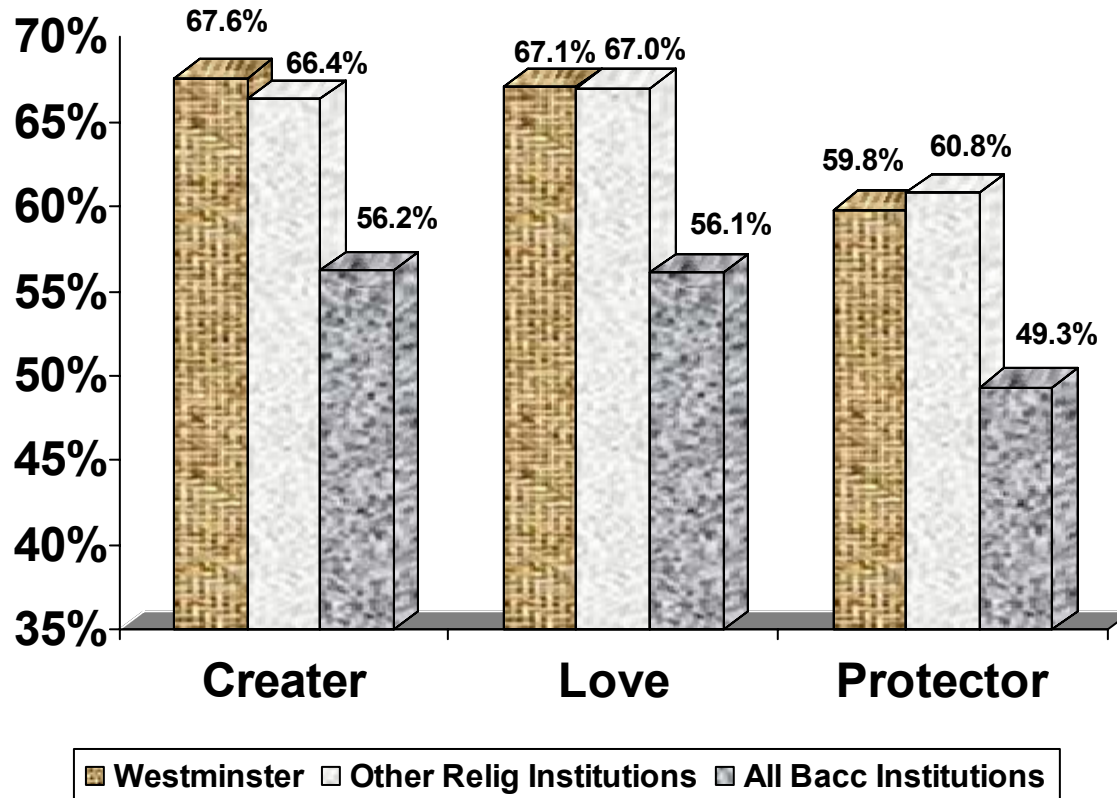


■ Westminster ■ Other Relig Institutions ■ All Bacc Institutions



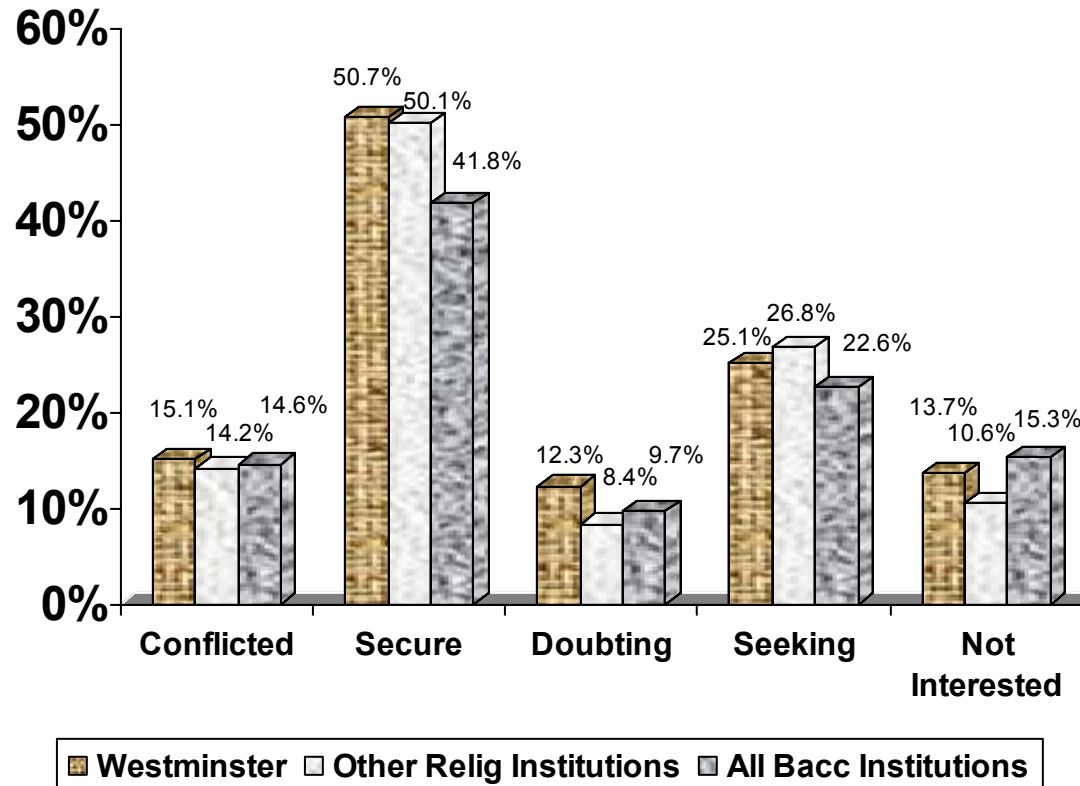
% responding “yes” on 2004 College Student’s Belief and Value Survey (CSBV)

What is your Conception of or Experience with God?



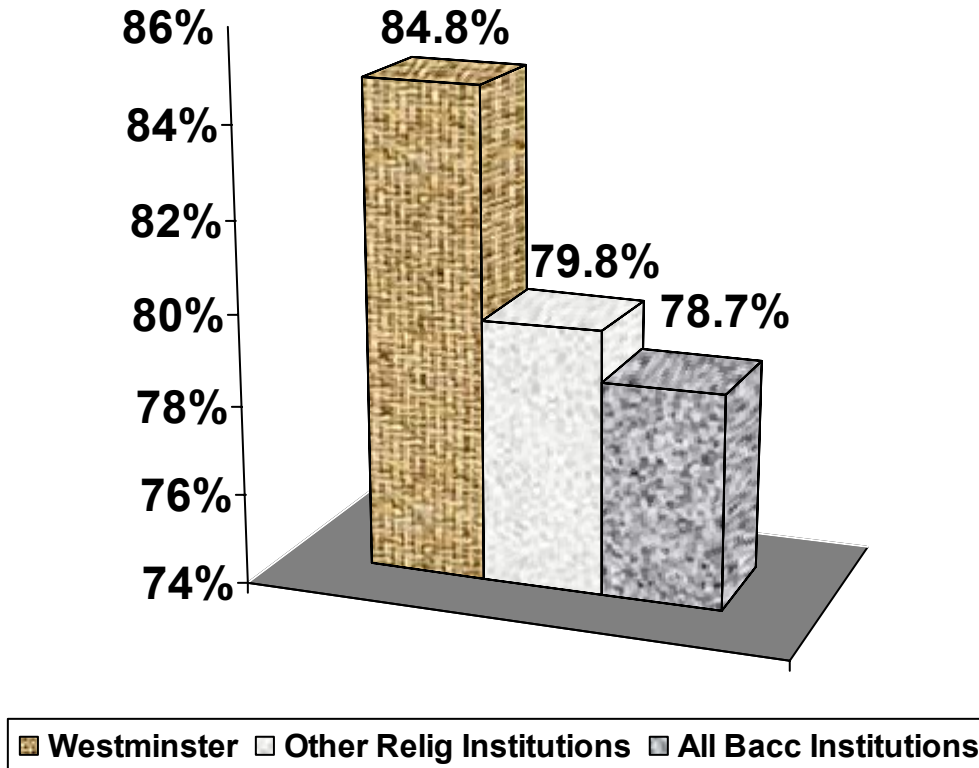
2004 College Student's Belief and Value Survey (CSBV)

How would you describe your current views about spiritual/religious matters?



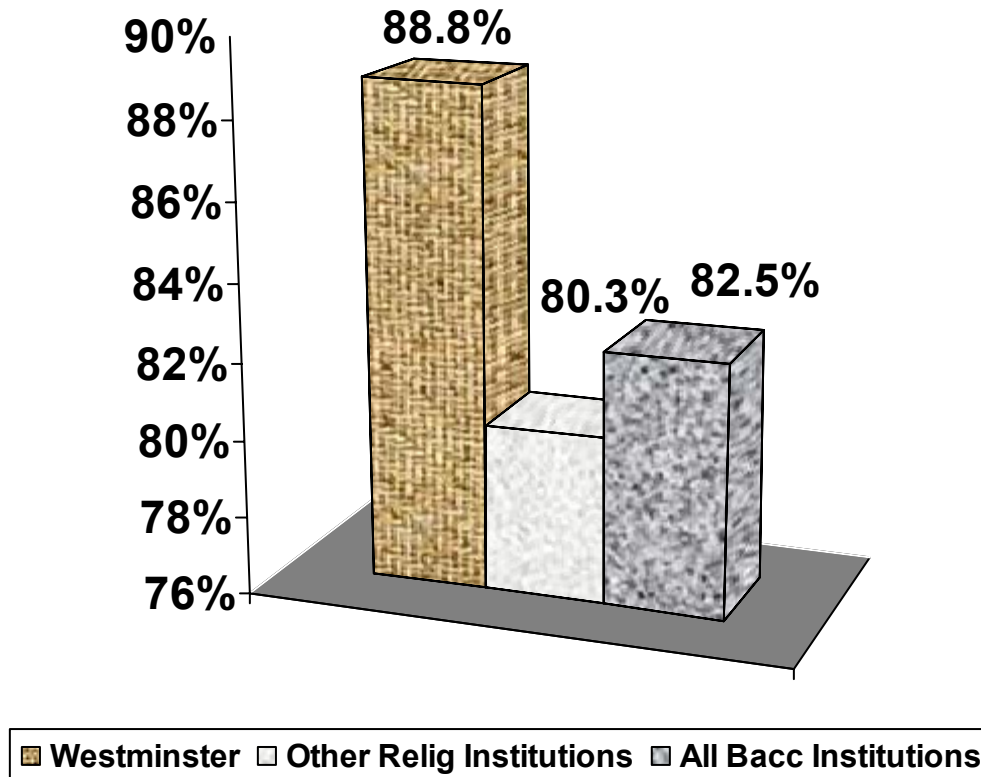
2004 College Student's Belief and Value Survey (CSBV)

All life is interconnected?



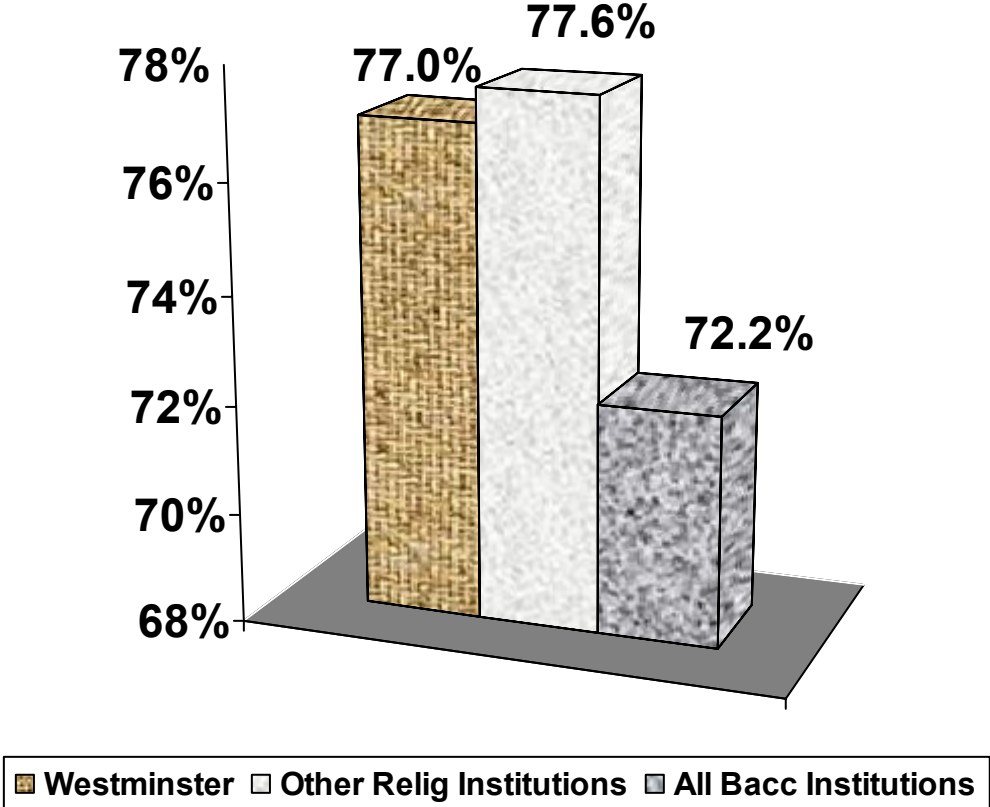
% who agreed "strongly" or "somewhat" on
2004 College Student's Belief and Value Survey (CSBV)

Non-religious people can lead lives that are just as moral as religious believers?



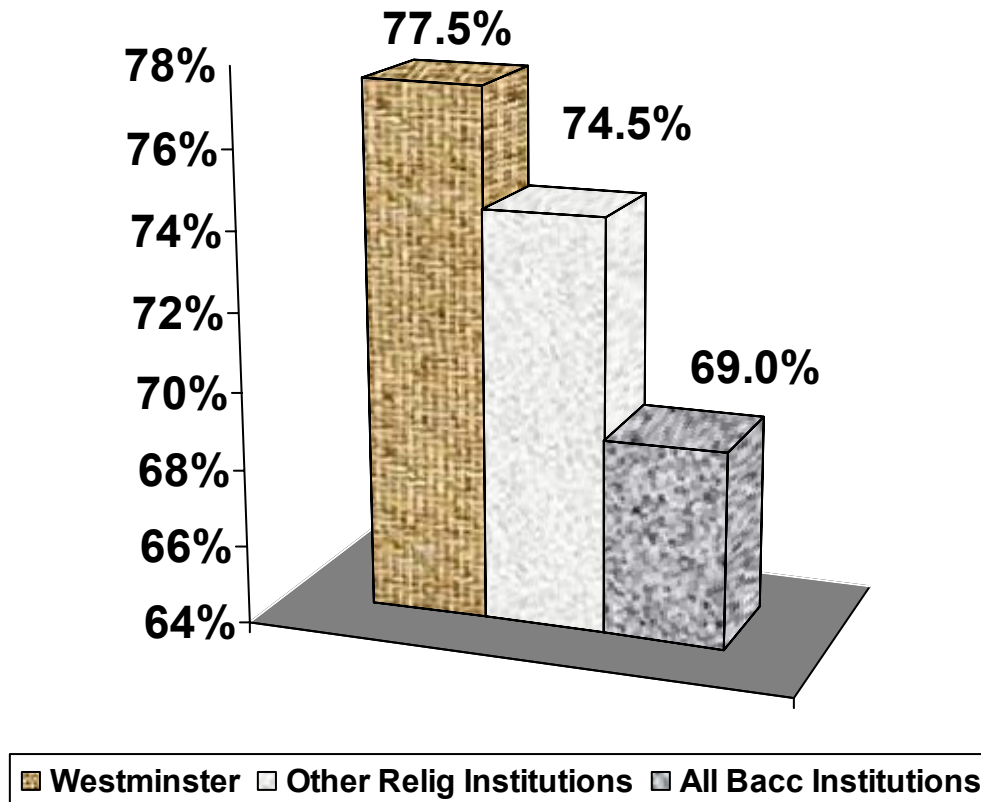
% who agreed "strongly" or "somewhat" on
2004 College Student's Belief and Value Survey (CSBV)

Love is the root of all great religions?



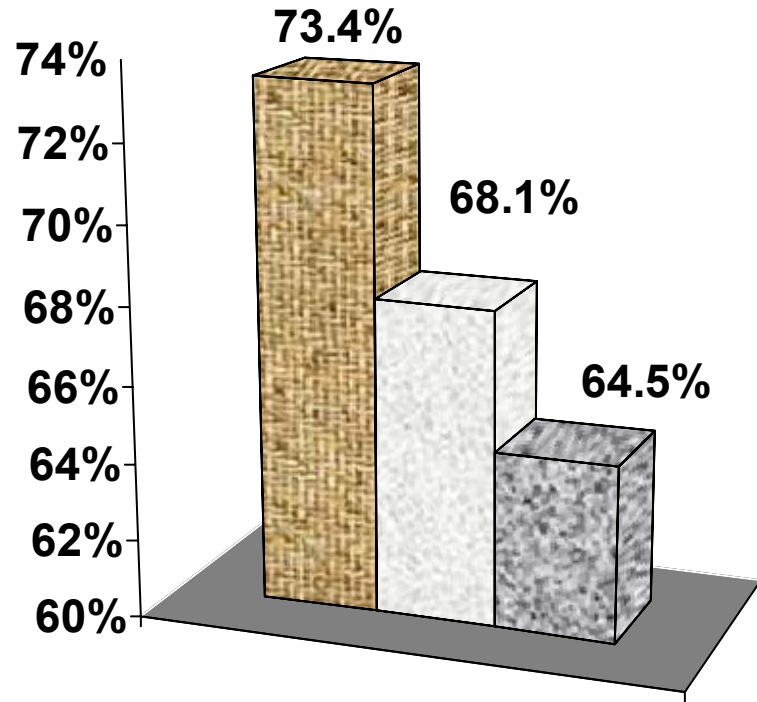
% who agreed “strongly” or “somewhat” on
2004 College Student’s Belief and Value Survey (CSBV)

We are all spiritual beings?



% who agreed "strongly" or "somewhat" on
2004 College Student's Belief and Value Survey (CSBV)

Pain and suffering are essential to becoming a better person?

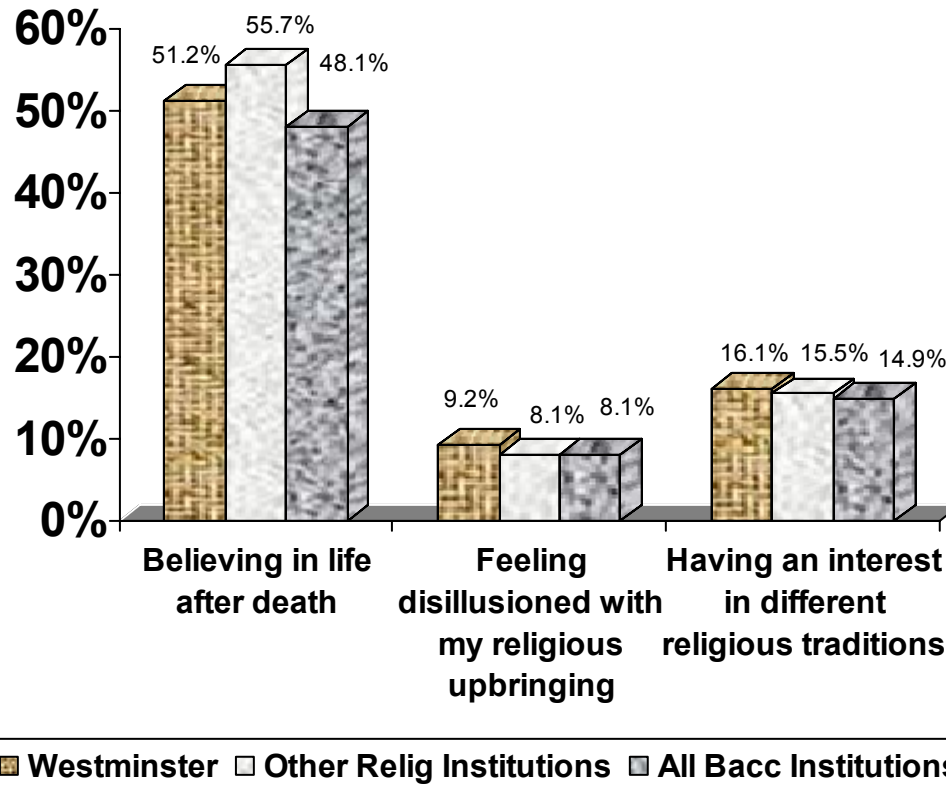


■ Westminster ■ Other Relig Institutions ■ All Bacc Institutions



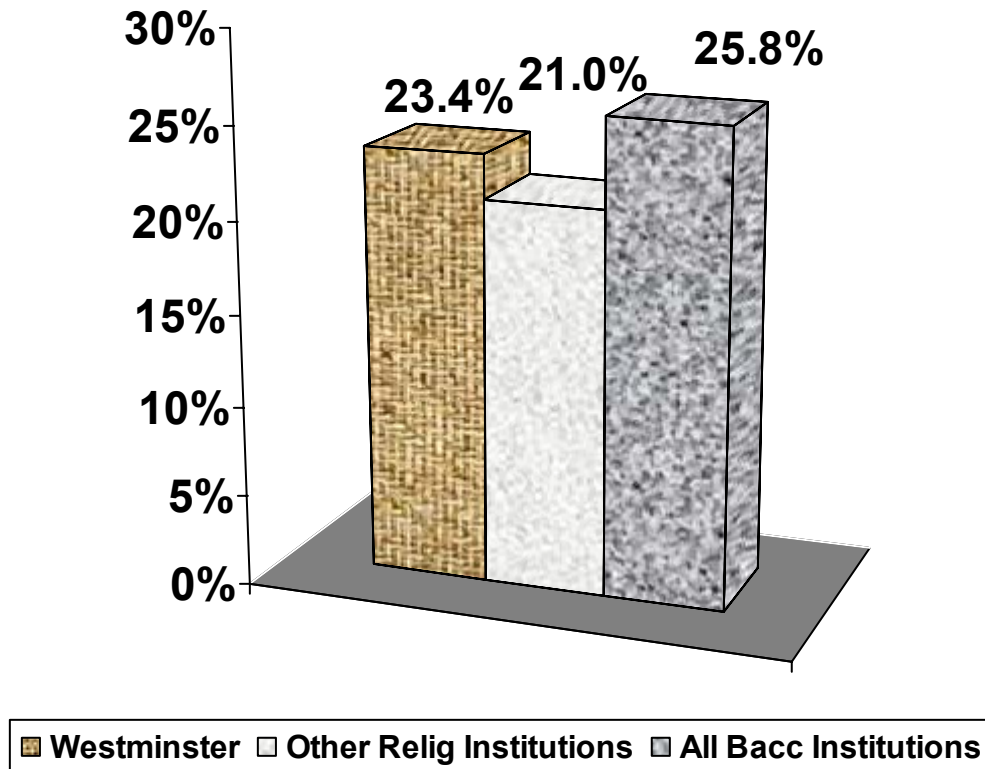
% who agreed “strongly” or “somewhat” on
2004 College Student’s Belief and Value Survey (CSBV)

Statements describing the student “to a great extent”



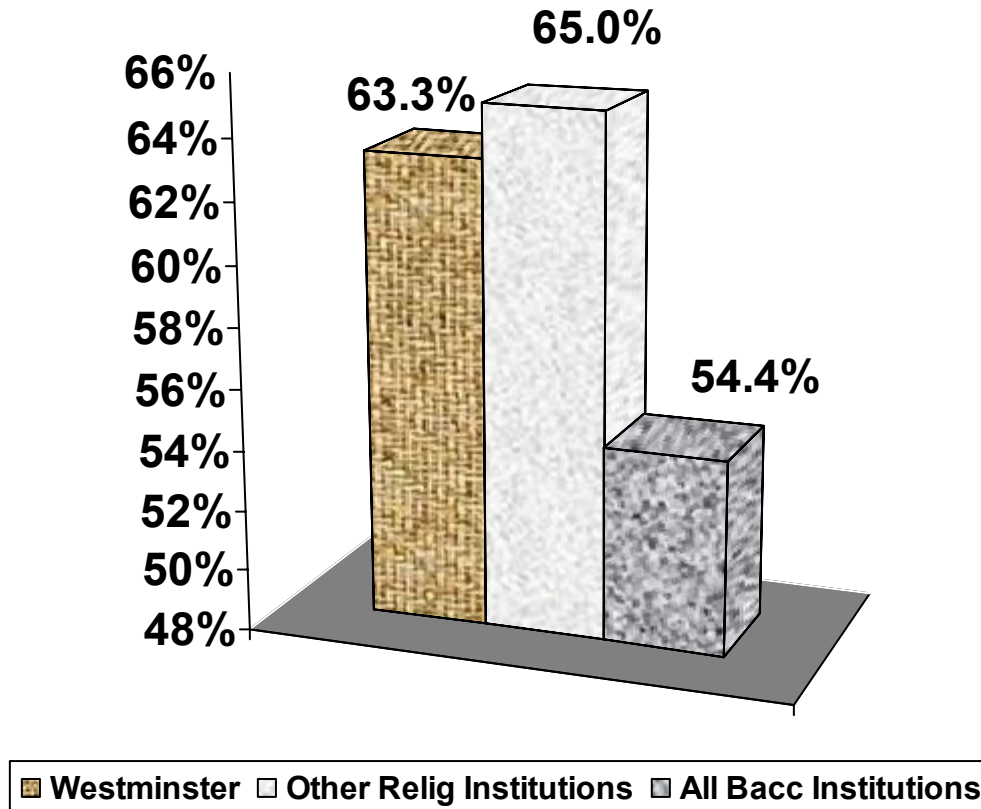
2004 College Student's Belief and Value Survey (CSBV)

The universe arose by chance?



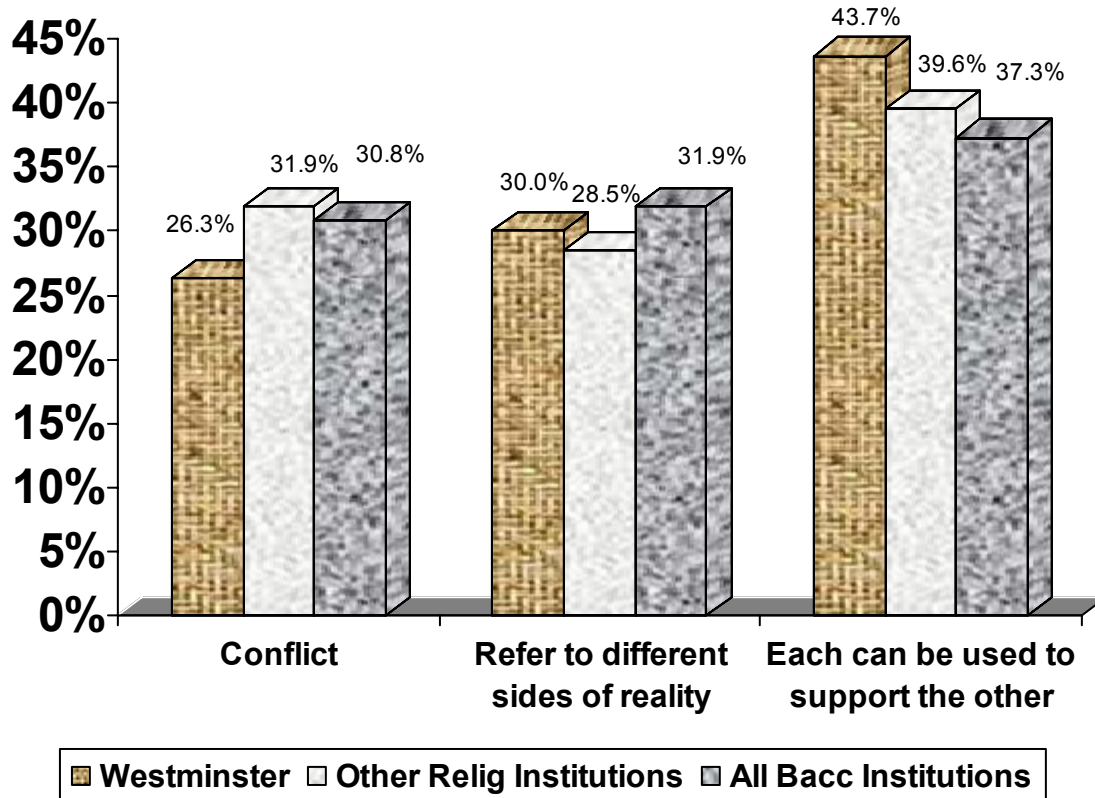
% who agreed "strongly" or "somewhat" on
2004 College Student's Belief and Value Survey (CSBV)

Only religion can truly explain existence?



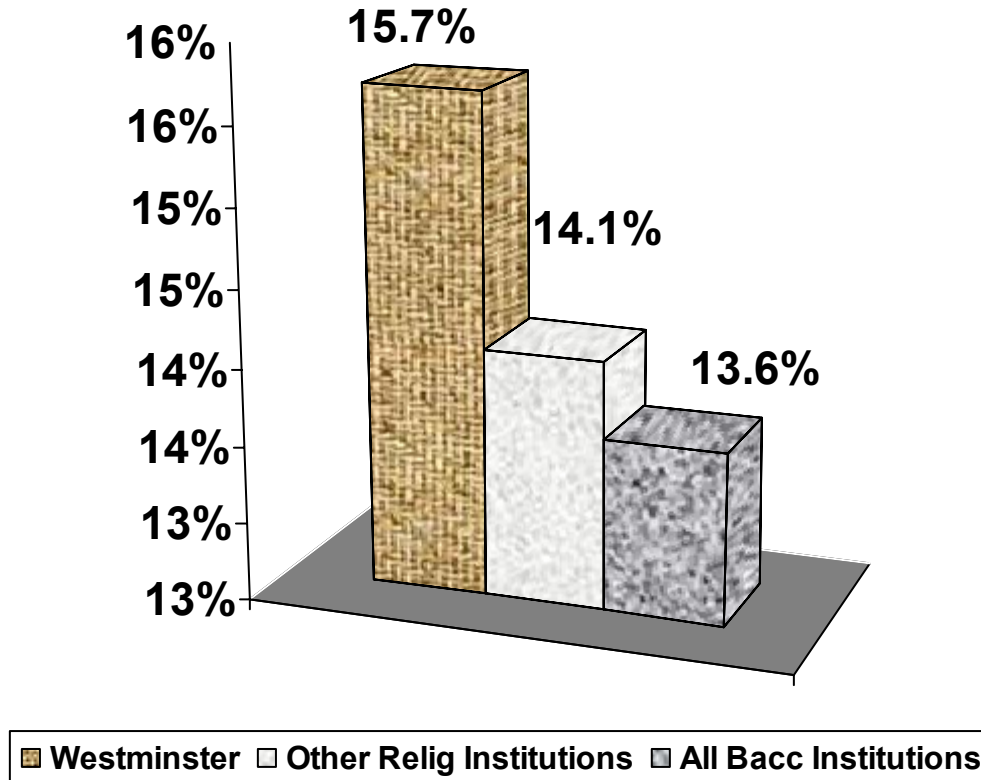
% who agreed "strongly" or "somewhat" on
2004 College Student's Belief and Value Survey (CSBV)

Relationship between Science and Religion



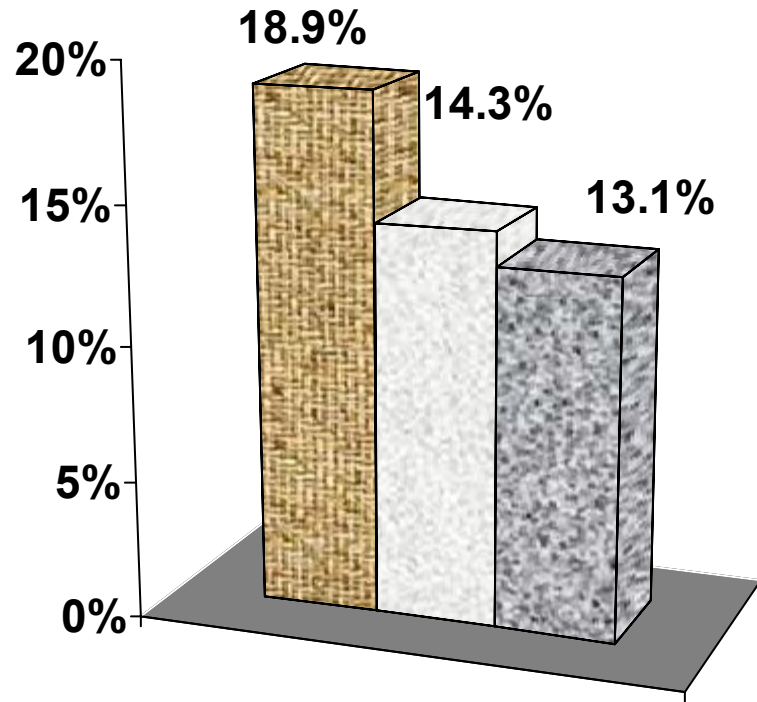
2004 College Student's Belief and Value Survey (CSBV)

% with High Scores on Factors Linked with Pluralistic Worldview



2004 College Student's Belief and Value Survey (CSBV)

% with High Scores on Factors Linked with Social Activism

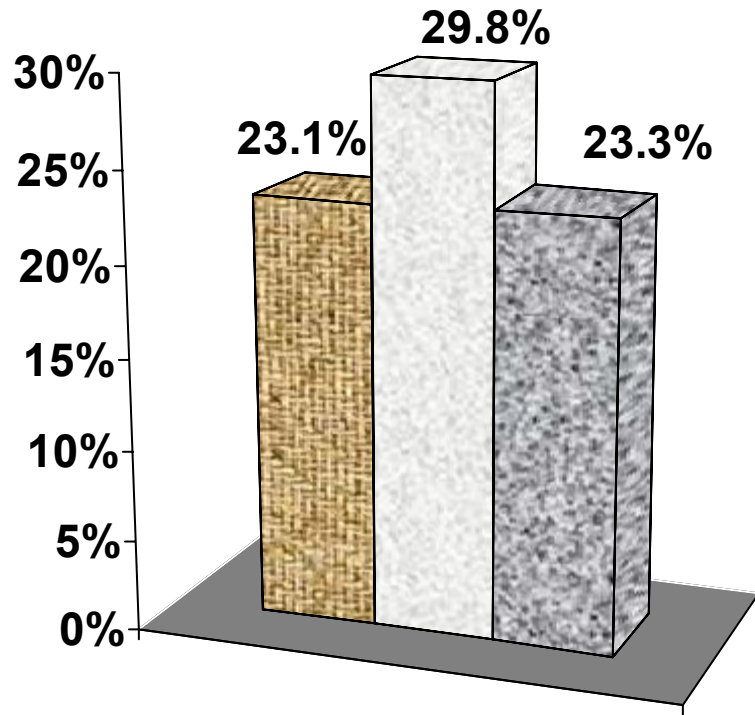


■ Westminster ■ Other Relig Institutions ■ All Bacc Institutions



2004 College Student's Belief and Value Survey (CSBV)

% with High Scores on Factors Linked with Religious or Social Conservatism

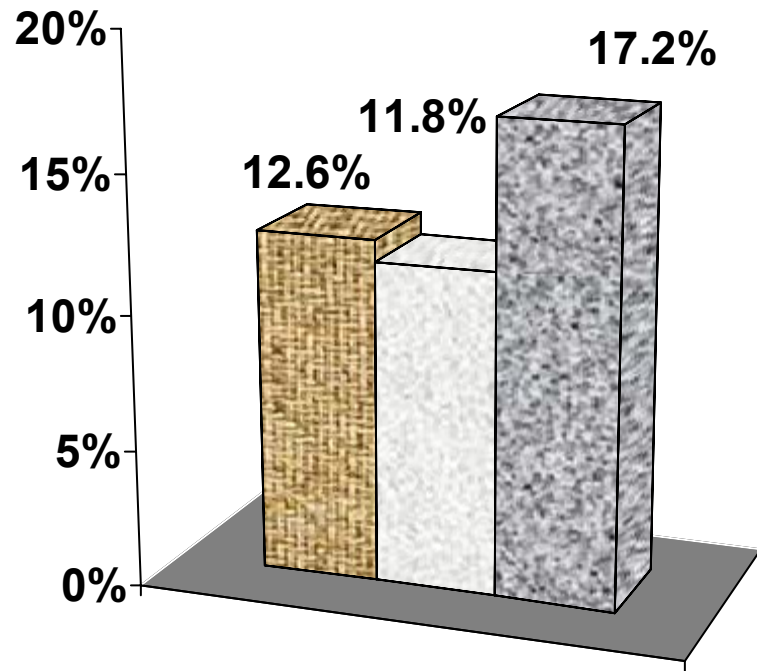


■ Westminster ■ Other Relig Institutions ■ All Bacc Institutions



2004 College Student's Belief and Value Survey (CSBV)

% with High Scores on Factors Linked with Religious Skepticism

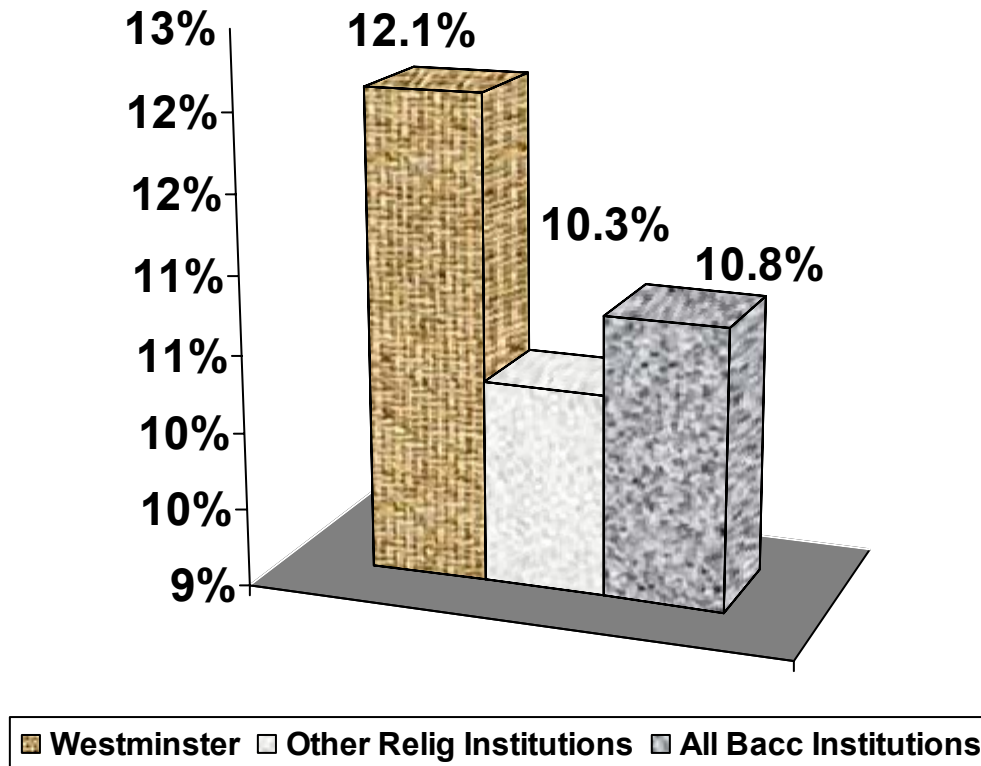


■ Westminster ■ Other Relig Institutions ■ All Bacc Institutions



2004 College Student's Belief and Value Survey (CSBV)

% with High Scores on Factors Linked with Spiritual Struggle



2004 College Student's Belief and Value Survey (CSBV)