

Executive Summary of the 2011 NSSE Results for Westminster College

Dr. Robert Seelinger, Professor and Director of Assessment
 Dr. Ray Brown, Director of Institutional Research

Westminster College (WC) has used the results of the National Survey of Student Engagement (NSSE) for the past nine years to assess the degree to which WC freshmen and seniors are engaged in effective learning practices linked to academic success. One hundred thirty-eight (138) WC first-year students and 96 WC seniors completed the survey in Spring, 2011.

Participation Rates	
2002-2003	63%
2003-2004	56%
2004-2005	51%
2005-2006	80%
2006-2007	59%
2007-2008	56%
2008-2009	59%
2009-2010	64%
2010-2011	54%
mean = >	60%

The NSSE Institute prepares an institutional report each year that shows how WC students compare to those at other institutions on five benchmarks, each of which are compilations of a number of different questions asked on the survey. WC also compares its results with those of three groups: selected peer institutions, peers in the same Carnegie classification, and the entire pool of NSSE institutions.

- Overall, the 2011 NSSE results show that WC is providing a solid educational experience for its students. Further, WC is distinguishing itself from its selected and Carnegie peers on most NSSE measures of student engagement.
- WC's mean benchmark scores are all above the means for institutions that scored in the top 50%. One of five WC senior means and three of five means of first-year students are at or above comparable means for the top 10% for all NSSE institutions.

2011		<i>Westminster (MO) compared with other High Performing Institutions</i>								
	Westminster (MO)	NSSE 2010 Top 50%			Westminster At or Above Top 50%?	NSSE 2010 Top 10%			Westminster At or Above Top 10%?	
	<i>Mean</i> ^a	<i>Mean</i> ^a	<i>Sig</i> ^b	<i>Effect size</i> ^c		<i>Mean</i> ^a	<i>Sig</i> ^b	<i>Effect size</i> ^c		
First-Year	LAC	60.3	56.7	**	.28	Yes	60.6		-.02	
	ACL	52.7	48.0	***	.28	Yes	52.1		.03	Yes
	SFI	44.3	39.3	***	.26	Yes	43.6		.03	Yes
	EEE	35.5	30.5	***	.38	Yes	33.7	*	.13	Yes
	SCE	67.5	67.4		.01	Yes	71.2		-.21	

Codes: LAC = Level of Academic Challenge ACL = Active & Collaborative Learning SFI = Student Faculty Interaction
 EEE = Enriching Educational Experiences SCE = Supportive Campus Environment

Senior	LAC	63.2		60.5	*	.20	Yes		64.1		-.06	
	ACL	61.3		56.2	**	.30	Yes		60.1		.06	Yes
	SFI	55.1		49.3	**	.27	Yes		56.0		-.04	
	EEE	56.3		46.7	***	.54	Yes		55.3		.06	Yes
	SCE	67.9		64.9		.16	Yes		68.7		-.05	

a. Weighted by gender, enrollment status, and institutional size

b. ** $p < .05$ and *** $p < .001$ (2-tailed)

c. Mean difference divided by pooled standard deviation

- Comparison of NSSE results for the same class, as first-year students and again when they are Seniors, show improvement on four of five benchmarks. These gaps are also wider for four of the five benchmarks than the preceding comparison between first-year students completing the NSSE in the spring of 2008 and their corresponding NSSE scores from spring of 2011.

Benchmark	WC First-Year 2008	WC Senior 2011	Difference & Direction of Change
Level of Academic Challenge (LAC)	57.0	63.2	6.2 ↑
Active and Collaborative Learning (ACL)	51.6	61.3	9.7 ↑
Student-Faculty Interaction (SFI)	41.3	55.1	13.8 ↑
Enriching Educational Experience (EEE)	38.9	56.3	17.4 ↑
Supportive Campus Environment (SCE)	71.4	67.9	-3.5 ↓

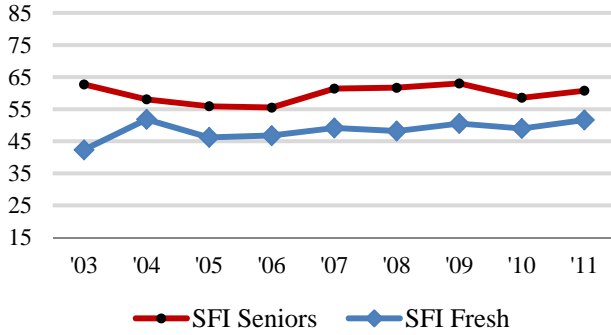
- Benchmark means for Westminster seniors have generally shown improvement over the corresponding means when those same students were in their first year. Supportive Campus Environment is the one exception where seniors in three of the five most recent years have reported a less supportive environment than they reported during their first year on campus.

Summary of Changes in WC Benchmarks from First-Year to Senior-Year						
Benchmark	WC Seniors 2006	WC Senior 2007	WC Senior 2008	WC Senior 2009	WC Senior 2010	WC Senior 2011
Level of Academic Challenge (LAC)	3.5	0.0	6.4	6.6	5.8	6.2
Active and Collaborative Learning (ACL)	15.1	14.5	16.8	14.6	11.3	9.7
Student-Faculty Interaction (SFI)	13.2	9.6	15.5	16.3	9.4	13.8
Enriching Educational Experience (EEE)	n.a.	23.0	21.6	23.0	18.9	17.4
Supportive Campus Environment (SCE)	-0.7	-2.9	1.2	1.7	-1.6	-3.5

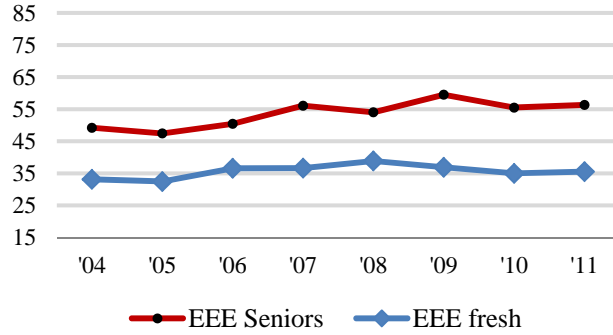
Note: EEE benchmark scores available for first-year students beginning in Spring 2004

- When comparing means for first-year students and seniors in a given year, WC seniors tend to have higher scores on four of the five NSSE benchmarks. The benchmark for Supportive Campus Environment is the one exception where means for first-year students tend to be higher than the corresponding means for seniors.

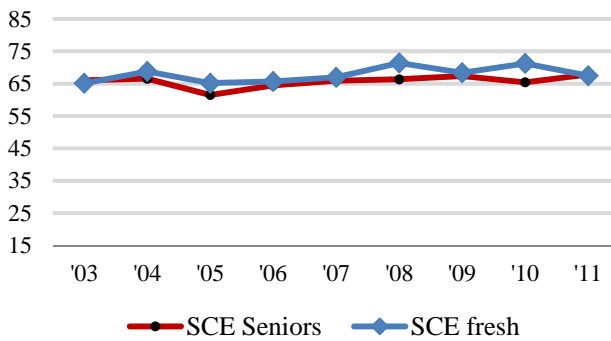
Student-Faculty Interaction (SFC)^b



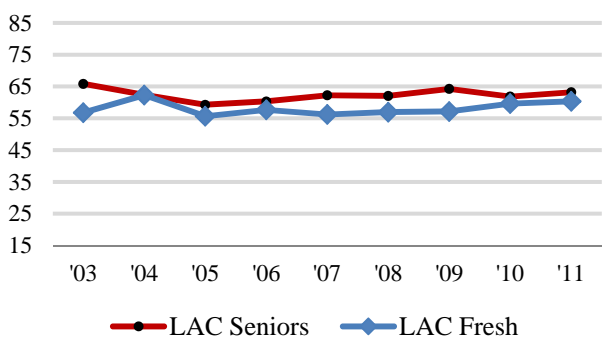
Enriching Educational Experiences (EEE)^c



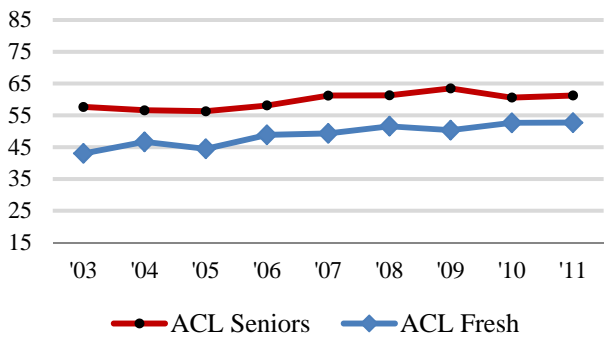
Supportive Campus Environment (SCE)



Level of Academic Challenge (LAC)



Active and Collaborative Learning (ACL)



Overall Conclusions

WC's results continue to be exceptional on most NSSE indicators. WC performs well when compared to the national sample of institutions participating in the NSSE and WC is distinguishing itself from its selected peers and Carnegie classification peers (i.e. other baccalaureate liberal arts colleges). Overall, students appear to be both very engaged and quite satisfied with their WC educational experience, a perception that has remained consistent across the nine years that WC has been participating in the NSSE.